



Certificate IATF 0428441
Certificate SGS GB13/87507

The management system of

Shin-Etsu Handotai Europe Ltd

Wilson Road, Toll Roundabout, Elburn, Livingston,
West Lothian, EH54 7DA, United Kingdom

Has been assessed and certified as meeting the requirements of

IATF 16949:2016

Edition 1

For the following activities

Manufacture of silicon wafers (polished and epitaxial).
EXCLUSIONS: 8.3 Product Design

3 Year certification is valid from 07 October 2021 until 06 October 2024
and remains valid subject to satisfactory surveillance audits
Version no. 5 Current version updated 07 October 2021



Authorised by

Hamed Radwan

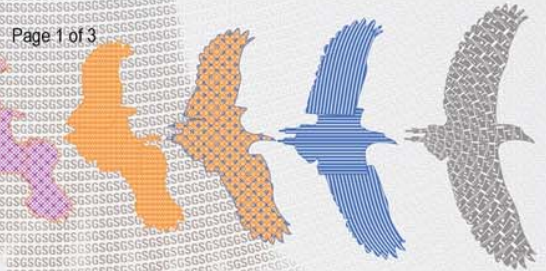


Veto Power Authority

Contracted Office: SGS United Kingdom Ltd, Station Road, Oldbury, West Midlands, B69 4LN, UK
Email: neil.hall@sgs.com

SGS IATF 16949 0517 M3 HR

Page 1 of 3



This document is a Web version of SGS certificate for electronic use exclusively. It shall only be available by clicking on SGS Certification Mark which has been posted on Your website. It shall not be printed in anyway. This document is copyright protected. No content or appearance may be reproduced without the express written permission of SGS. Any misuse, alteration, forgery or falsification is unlawful.

Certificate IATF 0428441
Certificate SGS GB13/87507



Shin-Etsu Handotai Europe Ltd

IATF 16949:2016

Edition 1



Additional facilities

Support Function

**Shin-Etsu Handotai Co., Ltd
2-13-1 Isobe, Annaka-shi, Gunma, Japan**

Summary of Activities

Calibration, Process Design

Support Function

**SEH America, Inc.
4111 NE 112th Avenue, Vancouver, WA 9862, United States**

Summary of Activities

Sales, Customer Service

Support Function

**SEH Malaysia
Lot 2, Lorgong Enggang, Ulu Kelang Free Trade Zone,
54200 Ulu Kelang, Selangor, Malaysia**

Summary of Activities

Sales, Customer Service

Support Function

**Shin-Etsu Handotai Taiwan
No 12 Industry E. Road, IX Hsinchu Science Park, Hsinchu, R.O.C**

Summary of Activities

Sales, Customer Service



This document is a Web version of SGS certificate for electronic use exclusively. It shall only be available by clicking on SGS Certification Mark which has been posted on Your website. It shall not be printed in anyway. This document is copyright protected. No content or appearance may be reproduced without the express written permission of SGS. Any misuse, alteration, forgery or falsification is unlawful.

Certificate IATF 0428441
Certificate SGS GB13/87507



Shin-Etsu Handotai Europe Ltd

IATF 16949:2016

Edition 1



Summary of Activities

Support Function

SHE Germany

Fabrikstrasse 8, 85354 Freising, Germany

Summary of Activities

Customer Service, Sales, Contract Review

Support Function

Shin-Etsu Handotai Europe Ltd
1681 Route Des Dolines, Les Traissounieres,
D6560 Sophia-Antipolis, France

Summary of Activities

Customer Service, Sales, Contract Review



This document is a Web version of SGS certificate for electronic use exclusively. It shall only be available by clicking on SGS Certification Mark which has been posted on Your website. It shall not be printed in anyway. This document is copyright protected. No content or appearance may be reproduced without the express written permission of SGS. Any misuse, alteration, forgery or falsification is unlawful.